

Why pay
MORE
for comparable
products?

SAVINGS OF OVER
\$15,000 A YEAR
COMPARED TO
ULTRADENT®*
PRODUCTS

Pre-Bent Tips

Ideal for use with etchants, resins, and flowable composites

BUY 3 100/CUP GET 1 FREE
Save up to 70%

- Opaque photo-sensitive hub
- Blunt end pre-bent needle
- Universal luer lock hub



COLOR	GAUGE	20 / CUP	100 / CUP
	16ga - White	[V16-0323]	[V16-0324]
	20ga - Opaque	[V16-0328]	[V16-0325]
	22ga - Opaque Black	[V16-0329]	[V16-0326]
	25ga - Blue	[V16-0330]	[V16-0327]
		\$7.50	\$12.50

Compare to Ultradent** Product:		
Blue Micro** Tips	[127]	\$34.49
Black Micro** Tips	[1085]	\$34.49

NEW! Elasti-Vac™ Tips (Patented)

Intended for endodontic evacuation, though not limited to.

Save up to 28%

- Narrow, flexible tip easily navigates curved canals.
- Allows for quick and easy removal of moisture from endodontic canal systems
- Luer lock hub



QTY	SKU	PRICE
20 / cup	[V16-2044]	\$10.85
50 / cup	[V16-2046]	\$20.95
Compare ▶ Ultradent** Product Capillary Tips		
20 / pk	[341]	\$14.99
50 / pk	[3099]	\$28.99

Stat-Flo™ Tips - Pre-bent 19ga Application Tips

Ideal for application of hemostatic agents

BUY 2 100/CUP, GET 1 FREE
Save up to 41%

- Curved cannula for optimal visibility
- Padded-end brush tip



QTY	SKU	PRICE
20 / cup	[V16-0237]	\$13.55
100 / cup	[V16-0232]	\$52.95
500 / bag	[V16-0230]	\$193.50

Compare ▶ Ultradent** Product Metal Dento-Infuser** Tips		
100 / pkg	[2559]	\$62.49
500 / pkg	[2560]	\$228.99

Spira-Flo™ Brush Tips

Nylon brush fiber for controlled delivery of viscous materials, etchants and resins

• BUY 3 100/CUP, GET 1 FREE
• BUY 2 500/CUP, GET 1 100/CUP FREE
Save up to 28%

- Curved cannula for optimal entry
- Internal spiral channel
- Adjustable brush tip fiber length
- Minimizes bubbles



	QTY	SKU	PRICE
Luer Lock Hub	100 / cup	[V16-1630]	\$57.75
	500 / bag	[V16-1632]	\$231.50

Compare ▶ Ultradent** Product Inspirial** Brush Tips		
100 pk	[123]	\$63.49
500 pk	[1033-I]	\$227.49

Sol-u-Flo™ Applicator Tips

Ideal for use with low viscosity solutions

Save up to 16%

- 19ga tip with adjustable brush fiber length
- Curved cannula for optimal entry



	QTY	SKU	PRICE
Opaque Luer Lock Hub	20 / cup	[V16-0236]	\$13.45
	100 / cup	[V16-0234]	\$44.05
	500 / bag	[V16-0233]	\$162.85

Compare ▶ Ultradent** Product Black Mini** Brush Tips		
20/pk	[193]	\$14.49
100/pk	[1169]	\$50.49
500/pk	[1432]	\$193.49

Appli-Vac™ - 3/4" Bendable Tips

Ideal tips for application and aspiration

BUY 3 GET 1 FREE
Save up to 74%

- Extended 3/4" length for pockets, fistulas and surgical sites
- Blunt end, dead-soft needle resists crimping
- Appli-Vac™ - Universal luer lock style hub



COLOR	GAUGE	100 / BAG	PRICE
	16ga - White	[V16-0217]	\$18.75
	18ga - Pink	[V16-0207]	
	19ga - Brown	[V16-0208]	
	20ga - Yellow	[V16-0209]	
	22ga - Black	[V16-0210]	
	25ga - Blue	[V16-0211]	
Compare ▶ Ultradent** Product Endo-Eze** Tips			[1431] \$56.49
3/4" Bendable Combo Kit (20 tips of each gauge)		120 / pk [V16-0206]	\$21.70

Micro Flowthru® Brush Tips (Patented)

- Bendable brush tips bends up to 90° without crimping
- Non-linting, non-absorbent plastic applicator brush tips



Luer Lock Hubs

COLOR	GAUGE	20 / CUP	100 / CUP
	20ga	[V16-0928]	
	22ga	[V16-0920]	[V16-0914]
	25ga	[V16-0922]	[V16-0916]
PRICE		\$11.50	\$40.40
Compare to Ultradent** Product: Micro 20ga FX** Tip [1405]			

Appli-Vac™ - 1" Bendable Tips

Appli-Vac™ tips are slotted and side-vented for safe irrigation

BUY 2 100/BAG. GET 1 FREE
Save up to 62%



Luer Lock Hub



COLOR	GAUGE	20 / CUP	100 / BAG
	23ga - Blue	[V16-0331]	[V16-0354]
	27ga - Yellow	[V16-0332]	[V16-0355]
	30ga - Purple	[V16-0335]	[V16-0616]
PRICE		\$7.50	\$30.95
Compare ▶ Ultradent** Product Endo-Eze** Tips		[345] \$13.99	\$56.49
		[350] 27.99	

Appli-Vac™ tips come individually capped in 100 / bag

Volu-Flo™ Tips

Large 18ga tip opening to allow easy extrusion of viscous materials

Save up to 9%

- Designed to deliver large volumes of material
- Photo sensitive opaque tip maintains the flow of light-cured materials



	QTY	SKU	PRICE
Luer Lock Hub	100 / cup	[V16-1704]	\$31.50
	500 / bag	[V16-1706]	\$120.25
Compare ▶ Ultradent** Product Black Mini** Tips			
	100 pk	[514]	\$34.49
	500 pk	[1433]	\$124.49

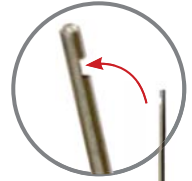
Vista-Probe™ - 1" Bendable Tips

Vista-Probe™ tips are closed-end for side-port delivery

BUY 2 100/BAG, GET 1 FREE
Save up to 59%



Luer Lock Hub



COLOR	GAUGE	20 / CUP	100 / BAG
	23ga - Blue	[V16-0359]	[V16-0356]
	27ga - Yellow	[V16-0360]	[V16-0357]
	30ga - Purple	[V16-0574]	[V16-0573]
PRICE		\$19.75	\$79.70
Compare ▶ Dentsply** Max-i-Probe** Tips			[350] \$128.99

Vista-Probe™ tips come individually capped in 100 / bag

Pocket-Probe™ (Patented)

Ideal tips for irrigation of inter-dental spaces and perio pockets.

- 21ga tip
- Multiple perforations for thorough flushing
- Closed end, flexible 2-piece bentplastic irrigation tip
- Universal luer lock style hub



QTY	SKU	PRICE
20 / cup	[V16-0580]	\$26.05
100 / cup	[V16-0358]	\$84.60

Visco-Tip™ (Patented)

The ONLY tip specially designed for easy delivery of Calcium Hydroxid

Save up to 31%

- Bendable, flexible 25ga tip

Secure-Lock™ hub for safe delivery



QTY	SKU	PRICE
20 / cup	[V16-1250]	\$27.35
50 / cup	[V16-1252]	\$59.55
Compare ▶ Ultradent** Product NaviTip** Tips		
20 / pk	[5116]	\$39.49
50 / pk	[1379]	\$68.49

Flexi-Glide™ Utility Tip (Patented)

Our best choice for irrigation

Save up to 17%

- 30ga disposable (single use) tip
- Flexible, bendable needle facilitates access
- Tip can be cut to desired length



	QTY	SKU	PRICE
Luer Lock Hub	20 / cup	[V16-0946]	\$32.90
	50 / cup	[V16-0942]	\$57.50
Compare ▶			
Ultradent** Product	20/pk	[1351]	\$39.49
NaviTip** Tips	50/pk	[3319]	\$68.49

Micro-Flo™ Tips (Patented)

Perfect tip for magnification enhanced procedures

Ideal for controlled microscopic delivery of etchants and composites in most micro-restorative procedures

- Disposable, polyimide tip provides unsurpassed delivery
- Bendable needle offers greater access



GAUGE	20 / cup	50 / cup
26ga	[V16-0341]	[V16-0338]
27.5ga	[V16-0342]	[V16-0339]
30ga	[V16-0343]	[V16-0340]
PRICE	\$23.45	\$62.50

Appli-Vac™ Pre-Tipped Syringes

BUY 3 GET 1 FREE
Save up to 52%

- Side-vented needles similar to Monoject® style
- Increase efficiency with our pre-tipped syringes.
- Pre-tipped syringes are ideal for easy irrigation of pockets, fistulas and canals.

Tipped with
Appli-Vac™ Irrigating Tips



GAUGE	QTY	3CC SYRINGE	12CC SYRINGE
23ga	100 / box	[V16-0350]	[V16-0932]
27ga	100 / box	[V16-0351]	[V16-0934]
30ga	100 / box	[V16-0930]	[V16-0936]
PRICE		\$36.50	\$46.50
Compare ▶ Monoject** - 3cc syringe with 23ga & 27ga tip			\$56.99

Vista-Probe™ Pre-Tipped Syringes

BUY 3, GET 1 FREE
Save up to 43%

- Closed end, side-port needle.
- Increase efficiency with our pre-tipped syringes.
- Pre-tipped syringes are ideal for easy irrigation of pockets, fistulas and canals.

Tipped with
Vista-Probe™ Irrigating Tips



GAUGE	QTY	3CC SYRINGE	12CC SYRINGE
23ga	100 / box	[V16-0352]	[V16-0370]
27ga	100 / box	[V16-0353]	[V16-0372]
30ga	100 / box	[V16-0361]	[V16-0371]
PRICE		\$99.50	\$99.95
Compare ▶ Dentsply™ Max-i-Probe** with 23ga & 27ga tip			\$130.50

dripless syringe

Patent Pending

Vista Dental Products, the leader in endodontic irrigation introduces the world's only Dripless Syringe.

These patent pending syringes feature anti-drip technology, greatly reducing the risk of bleach stains, damage to skin, eyes and oral mucosa, and cost no more than a standard irrigating syringe!

Features a unique color coded plunger to quickly identify NaOCl, and color coded ring for improved visibility in magnified fields.



SKU	PRICE
[V16-1946]	\$52.50

- (100) 6cc Dripless Syringes
- (80) 27ga Secure-Lock™ Appli-Vac™ Irrigating Tips (side-vented)
- (20) 30ga Secure-Lock™ Vista-Probe™ Irrigating Tips (closed-end side port)

Luer Lock Syringes

Ideal for surgical site preparation.

BUY 3 GET 1 FREE
Save up to 44%

- Textured finger grips to minimize slippage
- Graduated (cc) increments
- **AUTOCLAVABLE** and non-sterile
- Standard luer lock style



Use with any Vista tips

	QTY	SKU	PRICE
1.2cc Syringe	100 / box	[V16-0618]	\$25.10
Compare ▶ Ultradent** Product			100 / box [157] \$35.49
3cc Syringe	100 / box	[V16-0320]	\$12.60
Compare ▶ Monoject™** Product			100 / box [8881513934] \$14.99
6cc Syringe	100 / box	[V16-0620]	\$15.95
Compare ▶ Ultradent** Product			10 / box [201]
12cc Syringe	100 / box	[V16-0322]	\$18.20

Colored Luer Lock Syringes

A fast, easy way to organize and identify syringes.

- Increases safety - reduces incidence of syringe swap
- Available in 3cc and 12cc with graduated increments
- **AUTOCLAVABLE** and non-sterile



3cc Colored Syringes

12cc Colored Syringes

COLOR (80/Box)	QTY	3CC SYRINGE	12CC SYRINGE
	80 / box	[V16-1804]	[V16-0373]
	80 / box	[V16-1808]	[V16-0374]
	80 / box	[V16-1800]	[V16-0375]
	80 / box	[V16-1802]	[V16-0376]
PRICE		\$11.40	\$22.50
Assorted Pack		[V16-1809]	[V16-0369]
(20 per color)		\$10.35	\$22.50

US-12 Utility Syringe

Ideal syringe for surgical site and post-surgical home irrigation

BUY 3 GET 1 FREE
Save up to 43%



QTY	SKU	PRICE
50 / pack	[V16-0450]	\$22.95
Compare ▶ Monoject** Product		[412] \$29.99

Quick-Stat™ FS

15.5% Ferric Sulfate Hemostatic Gel

BUY 3, GET 1 FREE
Save up to 45%

- Will not flow onto surrounding tissue
- Effective tissue management
- Quickly controls bleeding
- Includes Stat-Flo™ applicator tips



	SKU	PRICE
Standard Kit (4) 1.2mL prefilled syringes, (8) Stat-Flo™ tips	[V16-0150]	\$19.95
Compare ▶ Ultradent** Product ViscoStat** Kit [3093]		\$26.99
Bulk Syringe Kit (1) 30mL prefilled syringe, (20) Stat-Flo™ tips, (20) 1.2mL empty syringes and (1) docking port	[V16-0151]	\$38.00
Compare ▶ Ultradent** Product ViscoStat** Dento-Infuser** Kit [647]		\$54.99
Bulk Refill (1) 30mL prefilled syringe, (1) docking port	[V16-0397]	\$29.95
Compare ▶ Ultradent** ViscoStat** 30mL IndiSpense** Refill [645]		\$35.49
Value Pack (40) 1.2mL prefilled syringes, (50) Stat-Flo™ tips	[V16-0152]	\$93.65

Quick-Stat™ FREE

25% Aluminum Chloride Clear Hemostatic Gel

BUY 3 GET 1 FREE
Save up to 52%

- Surfactant lowers surface tension for better wound penetration
- Controls bleeding fast - WILL NOT stain tissue
- Viscous gel will not flow onto surrounding tissue
- Includes Stat-Flo™ applicator tips

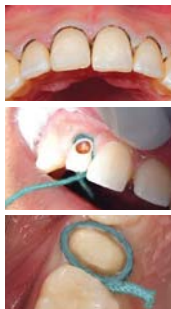


	SKU	PRICE
Standard Kit (4) 1.2mL prefilled syringes, (8) Stat-Flo™ tips	[V16-0379]	\$16.95
Compare ▶ Ultradent** Product ViscoStat** Clear [6409]		\$27.99
Bulk Syringe Kit (1) 30mL prefilled syringe, (20) Stat-Flo™ tips, (20) 1.2mL empty syringes and (1) docking port	[V16-0382]	\$38.85
Compare ▶ Ultradent** Product ViscoStat** Clear Dento-Infuser** Kit [6407]		\$56.49
Bulk Refill (1) 30mL prefilled syringe, (1) docking port	[V16-0381]	\$29.35
Compare ▶ Ultradent** Product ViscoStat** 30mL IndiSpense** Refill [6408]		\$36.99
Value Pack (40) 1.2mL prefilled syringes, (50) Stat-Flo™ tips	[V16-0380]	\$93.65

Stat-Pak™ - Knitted Retraction Cord

BUY 3, GET 1 FREE
Save up to 28%

- Knitted Stat-Pak™ cords are color coded for easy identification of cord size
- Cords place easily with no fraying and no memory
- Conform to sulcular anatomy with gentle outward force
- Cords remain in-situ, even when touched by a bur or diamond
- Each bottle contains 100 in / 245 cm



SIZE	COLOR	SKU	PRICE
000	Black	[V16-0385]	\$14.50
00	Navy	[V16-0386]	↓
0	Lavender	[V16-0387]	
1	Light Blue	[V16-0388]	
2	Yellow	[V16-0389]	

SIZE	COLOR	SKU	PRICE
000	Black	[137]	\$15.99
00	Orange	[136]	\$14.99
0	Lavender	[131]	\$13.99
1	Light Blue	[132]	\$13.99
2	Green	[133]	\$13.99

Stat-Pak™ +E - Braided Retraction Cord

Cord is Impregnated with Epinephrine

BUY 3, GET 1 FREE
Save up to 33%

- Easy to place WHITE cord
- Cord will not fray and has no memory
- Conforms to sulcular anatomy with gentle outward force
- Cords remain in-situ, even when touched by a bur or diamond



Each bottle contains 72in / 176 cm

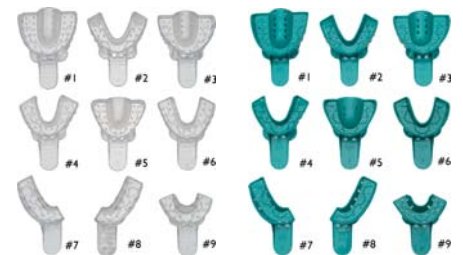
SIZE	SKU	PRICE	Compare to Ultradent** Product: Ultrapak** E Cord	PRICE
00	[V16-1644]	\$14.50	[197]	\$16.99
0	[V16-1646]	↓	[198]	\$15.99
1	[V16-1648]	↓	[199]	\$15.99

Impression Kit Trays

Rigid acrylic with key-way perforations and side wall slots to ensure material retention.

BUY 6, GET 4 FREE

- Superior retention
- Occlusal surface space minimizer
- Posterior rimlock minimizes secondary flow or gagging
- Finger rest ledges for easier removal from mouth
- Packaged: 12 / bag



IMPRESSION TRAYS	SKU (GREEN)	PRICE	SKU (CLEAR)	PRICE
#1 Large Upper	[V16-0100]	\$8.95	[V16-1272]	\$9.55
#2 Large Lower	[V16-0102]	↓	[V16-1274]	↓
#3 Medium Upper	[V16-0104]		[V16-1276]	
#4 Medium Lower	[V16-0106]		[V16-1278]	
#5 Small Upper	[V16-0108]		[V16-1279]	
#6 Small Lower	[V16-0110]		[V16-1280]	
#7 Upper Right / Lower Left	[V16-0112]		[V16-1282]	
#8 Lower Right / Upper Left	[V16-0114]		[V16-1284]	
#9 Anterior	[V16-0116]		[V16-1286]	

Fluorescent™ Doctor's Take-Home Whitening Kit

Clear, easy-to-use viscous take-home whitening gel formulated in 16% or 22% carbamide peroxide PLUS fluoride to help lower sensitivity. Comes in a convenient zippered cloth pouch with tie-wrap holder for syringes.

You get BETTER whitening power with LESS sensitivity!

**BUY 12, GET 12 FREE OR
BUY 3, GET 1 FREE
Save up to 45%**

Includes:

- (8) 1.2mL prefilled syringes with tips
- (2) EVS tray sheets 5" x 5" (.040mm)
- (1) Tray case



Take-Home Whitening Kit	MINT	CITRUS	PRICE
16% Carbamide Peroxide	[V16-1254]	[V16-1287]	\$35.15
22% Carbamide Peroxide	[V16-1258]	[V16-1288]	\$35.15
Compare ▶ Ultradent** Product			
Opalescence** Whitening Kits 15%	[5367]	[5368]	\$35.49
Opalescence** Whitening Kits 20%	[5370]	[5371]	\$35.49

Fluorescent™ Doctor's Take-Home Whitening Kit Refill

**BUY 12, GET 12 FREE OR
BUY 3, GET 1 FREE
Save up to 53%**

Includes:

- (40) 1.2mL prefilled syringes with tips
- Packaged in (10) 4-packs



Fluorescent™ Refill	MINT	CITRUS	PRICE
16% Carbamide Peroxide	[V16-1256]	[V16-1289]	\$118.95
22% Carbamide Peroxide	[V16-1260]	[V16-1290]	\$118.95
Compare ▶ Ultradent** Product			
Opalescence** Whitening Refill 15%	[5397]	[5398]	\$141.99
Opalescence** Whitening Refill 20%	[5400]	[5401]	\$141.99

Fluorescent™ EXpress White In-Office Whitening System

35% hydrogen peroxide, non-light activated!

Works incredibly fast!

**BUY 12, GET 12 FREE
Save up to 53%**

Includes:

- (1) Dual-barrel Whitening syringe
- (2) 1.2mL Desensitizer syringes
- (1) 2mL Liquid Dam syringe
- (5) 20ga Pre-bent tips
- (2) Micro brush applicators
- (5) 20ga Micro Flowthru® tips
- (1) White surgical evac tube
- (1) Cheek retractor
- (1) Whitening shade guide



In-office Whitening Kit	SKU	PRICE
	[V16-0383]	\$44.90
Compare ▶ Ultradent** Product		
Opalescence** Boost PF Patient Kit	[4751]	\$54.99

Best-Etch™ - 37% Phosphoric Acid Etch

Designed to etch and prepare dentin and enamel

Save up to 53%

- Viscous solution that stays in place
- Rinses clean with water and leaves no residue
- Pre-bent applicator tips ensure precise delivery

Includes 22ga Pre-Bent Tips

- 25ga Pre-Bent tips are available on request.
- Also available in unit dose.



Best-Etch™	SKU	PRICE
Standard Kit (4) 1.2mL prefilled syringes and (25) 22ga pre-bent tips	[V16-0630]	\$16.95
Compare ▶ Ultradent** Product Ultra-Etch** Kit	[163]	\$30.99
Bulk Etch Kit (1) 30mL prefilled syringe, (50) 22ga pre-bent tips, (5) empty 6cc syringes and (1) docking port	[V16-0638]	\$39.15
Compare ▶ Ultradent** Product Ultra-Etch** Syringe Kit	[383]	\$66.49
Bulk Syringe (1) 30mL prefilled syringe and (1) docking port	[V16-0636]	\$28.65
Compare ▶ Ultradent** Product Ultra-Etch** 30mL Syringe	[685]	\$56.49
Value Pack (12) 3mL prefilled syringes, (75) 22ga pre-bent tips	[V16-0632]	\$29.80
Compare ▶ Ultradent** Product Ultra-Etch** Kit	[168]	\$66.99

Porcelain Etch - Viscous 9.5% Hydrofluoric Acid Solution

For porcelain veneers and inlays prior to cementation or repairs.

**BUY 3 SILANE REFILLS GET 1 FREE
Save up to 25%**

- Viscous solution
- Rinses clean away
- Silane solution used after etchant enhances the bonding of resin material



Porcelain Etch	SKU	PRICE
Standard Kit (2) 1.2mL prefilled etch syringes, (2) 1.2mL prefilled silane syringes, (25) Spira-Flo™ brush tips	[V16-0640]	\$32.50
Compare ▶ Ultradent** Product Porcelain Etch Kit	[405]	\$56.99
Porcelain Etch Refill Kit (4) 1.2mL prefilled syringes, (25) Spira-Flo™ brush tips	[V16-0644]	\$37.20
Compare ▶ Ultradent** Product Porcelain Etch Mini Refill (2) 1.2mL syringes	[406]	
Silane Refill (4) 1.2mL prefilled syringes	[V16-0642]	\$16.10
Compare ▶ Ultradent** Product Silane (2) 1.2mL syringes	[410]	\$16.99

Caries Indicator - Vista-Red™ & Vista-Green™

Glycol-based solution to facilitate removal of carious dentin.

Ensures maximum amount of inner dentin is preserved and infected dentin is removed.

Save up to 28%



Caries Indicator	SKU	PRICE
Standard Pack - Red (4) 1.2mL prefilled syringes, (20) Sol-u-Flo™ tips	[V16-0120]	\$28.50
Standard Pack - Green (4) 1.2mL prefilled syringes, (20) Sol-u-Flo™ tips	[V16-0122]	\$28.50
Compare ▶ Ultradent** Product Seek**	[209]	\$39.49
Ultradent** Product Sable™ Seek**	[233]	
Refill Pack - Red (4) 1.2mL prefilled syringes	[V16-0124]	\$20.15
Refill Pack - Green (4) 1.2mL prefilled syringes	[V16-0126]	\$20.15
Compare ▶ Ultradent** Product Seek** - Refill	[210]	\$27.99
Ultradent** Product Sable™ Seek** - Refill	[234]	

Micro-Applicator Brushes

For etchants, sealants, bonding agents and hemostatic agents

Save up to 5%

- Lint-free brush tip
- Non-absorbent
- Bendable

(as low as .12¢ ea.)



HEAD SIZE	COLOR	SKU	QTY	PRICE
Ultra-Fine	Lavender	[V16-1980]	100 / box	\$11.50
Fine	Pink	[V16-1982]	100 / box	\$11.50
Regular	Blue	[V16-1984]	100 / box	
Regular	Silver	[V16-1986]	100 / box	
Regular	Purple	[V16-1988]	100 / box	
Regular	Green	[V16-1990]	100 / box	
Compare ▶ Ultradent®* Product Micro Applicators [4548] 400 Pk				\$36.99

SmearOFF™ (Patent Pending)

Proprietary EDTA / CHX mix.

Formulated with wetting agents and surface modifiers. For best outcomes, our patent pending 2-in-1 mix effectively replaces two commonly used solutions: EDTA and CHX.

BUY 8 (MIX-N-MATCH), GET 1 FILL STATION™ FREE (16 OZ. BOTTLES ONLY, EXCLUDES NaOCl)

Save up to 33%

- Superior chelation
- Won't form precipitate when mixed with NaOCl
- No additional rinse needed when used with NaOCl
- Better calcium suspension
- Removes BOTH smear layer AND bacterial



SmearOFF™	SKU	PRICE
16oz. (480mL) bottle	[V16-1750]	\$100.30
4oz. (120mL) bottle	[V16-1752]	\$33.95
SmearOFF™ & Chlor-XTRA™ Irrigation Combo Pack	[V16-2018]	\$74.95
Compare ▶ QMix®* 2-in-1 brand		\$149.05

CanalClean™ 2S Kit

Complete Endodontic Irrigation

Save time, save money and improve outcomes in cleansing root canals

Ideal product for GP's doing occasional endo

Simple. Convenient. Affordable.

- Includes: (2) 30ga side-vented irrigating tips.
- Save Money, Space, and Mess

Step 1 – 12cc NaOCl – pharmacy controlled 6% concentration (Sodium Hypochlorite)

Step 2 – 6cc SmearOFF™

Dry: Micro-Aspirator with tip included



SKU	QTY	PRICE
[V16-0378]	4 Kits/box	\$44.50
(1) 12cc Chlor-XTRA™ (6% NaOCl), (1) 6cc SmearOFF™ (2-in-1), (2) 30ga side-vented tips, and (1) Micro Aspirator with tip		

EDTA

Less is MORE. Lower pH means MORE Effective Outcomes.

- **BUY 3 16 OZ. BOTTLES, GET 1 16 OZ. BOTTLE FREE**
- **BUY 8 (MIX-N-MATCH), GET 1 FILL STATION™ FREE (16 OZ. BOTTLES ONLY, EXCLUDES NaOCl)**

Save up to 33%

- Prepares dentin walls for better ADHESION of filling materials
- Opens dentin tubules
- Removes smear layer and dentin mud
- Enhances cleansing



EDTA	SKU	PRICE
30mL Bulk syringe	[V16-0411]	\$9.75
Compare ▶ Ultradent®* Product EDTA 18% IndiSpense®* Syringe [162]		\$13.99
16oz. (480mL) bottle	[V16-0409]	\$47.95
Compare ▶ Ultradent®* Product 16oz. bottle [4616]		\$56.49
4oz. (120mL) bottle	[V16-0408]	\$15.50
Unit Dose (20) 0.6mL individually packaged prefilled syringes, (20) 27ga side-vent irrigating tips	[V16-0410]	\$20.10

Chlor-XTRA™ (Multiple Patents Pending)

BUY 8 (MIX-N-MATCH), GET 1 FILL STATION™ FREE (16 OZ. BOTTLES ONLY, EXCLUDES NaOCl)

Vista's Chlor-XTRA™ is an enhanced 6% sodium hypochlorite solution designed for irrigation, debridement and cleansing of root canals during and after instrumentation. The addition of powerful wetting agents and proprietary surface modifiers enables it to penetrate into lateral canals and isthmuses by lowering the surface tension.



Chlor-XTRA™	SKU	PRICE
16oz. (480mL) bottle	[V16-1326]	\$56.00
3cc Pre-filled syringes (individually packaged) (10) prefilled syringes, (10) 27ga side-vent tips	[V16-1328]	\$15.50
12cc Pre-filled syringes (individually packaged) (10) prefilled syringes, (10) 27ga side-vent tips	[V16-1330]	\$15.50

CHX-Plus™ (Multiple Patents Pending)

BUY 8 (MIX-N-MATCH), GET 1 FILL STATION™ FREE (16 OZ. BOTTLES ONLY, EXCLUDES NaOCl)

Save up to 46%

Enhanced 2% Chlorhexidine Gluconate solution kills multispecies biofilm 2X faster than standard 2% Chlorhexidine. Contains 2% Chlorhexidine Gluconate plus powerful wetting agents and proprietary surface modifiers to improve the depth of penetration and kills bacteria 10X faster than normal 2% Chlorhexidine.



CHX-Plus™	SKU	PRICE
16 oz. (480mL) bottle	[V16-1332]	\$54.50
Compare ▶ Ultradent®* Product ConsepSis®* 16oz. bottle [4614]		\$66.49
Endo Kit – Includes: (4) 1.2mL prefilled syringes, (20) 27ga side-vent irrigating tips	[V16-1334]	\$13.95
Endo Refill Pack (20) 1.2mL prefilled syringes	[V16-0614]	\$19.10
Compare ▶ Ultradent®* Product ConsepSis®* Econo Refill [491]		\$35.49
30mL Bulk syringe (1) 30mL prefilled bulk syringe, (1) docking port	[V16-0613]	\$22.25
Compare ▶ Ultradent®* Product ConsepSis®* IndiSpense®* Syringe [2210]		\$35.49
30mL Bulk syringe kit (1) 30mL prefilled bulk syringe, (20) 1.2cc syringes (20) 27ga side-vent irrigating tips, (1) docking port	[V16-0609]	\$32.25
Prefilled syringes refill (4) 1.2mL prefilled syringes	[V16-0608]	\$7.50
Unit Dose (30) 0.6mL prefilled syringes, (30) 27ga side-vent irrigating tips	[V16-0607]	\$33.35

Sodium Hypochlorite - 3% and 6% Solutions

For the debridement and irrigation of root canals, both during and after instrumentation

Save up to 47%



	SKU	PRICE
Prefilled Syringes		
(10) prefilled syringes, (10) 27ga side-vent irrigating tips		
3mL syringes	3% [V16-0131]	\$11.90
	6% [V16-0130]	\$11.90
12mL syringes	3% [V16-0612]	\$11.90
	6% [V16-0132]	\$11.90
16oz. (480mL bottle)	3% [V16-0611]	\$14.95
	6% [V16-0610]	\$14.95
Compare ▶ Ultradent** Product ChlorCid** NaOCl [#4612] \$27.99		

Endodontic Tips - Restorative Tips

Versatile tips for retreatment and restorative procedures

BUY 2, GET 1 FREE

Save up to 33%

GEBD-1 / GEBD-2 (Ball shaped) + GEFD-1 / GEFD-2 (Football shaped)

Versatile tips are ideal for use in a wet or dry field.

Applications: refining axial walls, caries removal, cleaning pulp chamber, sanding dentin, finishing access cavity, and sanding and finishing restoratives.



THREAD STYLE	EMS** STYLE	ACTEON** STYLE	PRICE
GEBD-1 Small ball shape	[V16-1402]	[V16-1400]	\$96.50
GEBD-2 Large ball shape	[V16-1406]	[V16-1404]	\$96.50
GEFD-1 Small football shape	[V16-1410]	[V16-1408]	\$96.50
GEFD-2 Large football shape	[V16-1414]	[V16-1412]	\$96.50

Vista-Cal™

12.5 pH aqueous solution for temporary filling and cleansing root canals

Save up to 33%

- Contains no more than 35% Calcium Hydroxide paste
- Includes patented Visco-Tip™ and high pressure syringe for the most effective delivery of Calcium Hydroxide



	SKU	PRICE
Vista-Cal™ Standard Kit (10) Visco-Tips™, (4) 1.2mL prefilled high pressure syringes	[V16-0624]	\$34.50
Compare ▶ Ultradent** Product UltraCal** XS [1027] \$51.49		
Vista-Cal™ Refill Kit (20) 1.2mL prefilled high pressure syringes	[V16-0625]	\$72.15
Compare ▶ Ultradent** Product UltraCal** XS Econo (20) 1.2mL syringes [5117] \$95.99		

Vista-Blue™ (Methylene Blue)

Detects fractures and hard-to-find root canal orifices. Available in 2 sizes for multiple applications of Methylene Blue.

- Unit dose pack
- 10mL bottle kit
- Individually packaged unique vial with applicator brush



	QTY	SKU	PRICE
Vista-Blue™			
Unit Dose	30 / box	[V16-0814]	\$48.85

Endodontic Tips - Condensation Tips

BUY 2, GET 1 FREE

Save up to 33%

CT4 (thin tip)

Use for general purpose condensation of gutta-percha points in a properly sized canal.

CT7 (medium tip)

Twice the thickness of the CT4 throughout most of the tip and much more powerful.



THREAD STYLE	EMS** STYLE	ACTEON** STYLE	PRICE
CT4	[V16-1080]	[V16-1072]	\$99.95
CT7	[V16-1082]	[V16-1074]	\$99.95

AutoSyringe™

Patent Pending

Automatic delivery of endo solutions at the press of a button!

- Eliminate hand fatigue associated with standard syringe irrigation
- Quick-Connect, 20mL canisters that are easily filled and exchanged
- Adjustable flow rate settings ensure safe apical pressure
- Fully compatible with NaOCl



	SKU	PRICE
Complete AutoSyringe™ Kit (1) cordless handpiece, (2) 20mL canisters, (3) autoclavable sleeves, (20) Appli-Vac™ Irrigating Tips, (100) plastic barrier sleeves, and (1) charging base.	[V16-0870]	\$465.00

Endodontic Tips - Retreatment Tips

Versatile tips for retreatment and restorative procedures

BUY 2, GET 1 FREE

Save up to 33%

GE20 / GE20D (20mm tip to bend) + GE40 / GE40D (40mm tip to bend)

Versatile - ideal for use in either wet or dry fields.

PRT (post removal tip)

Ideal for loosening of posts with ultrasonic irrigation.

UCT (cavitation tip)

10mm of diamond coating for increased energy transfer.



THREAD STYLE	EMS** STYLE	ACTEON** STYLE	PRICE
GE20D Diamond	[V16-1062]	[V16-1040]	\$99.95
GE40D None	[V16-1066]	[V16-1044]	\$99.95
GE20 Diamond	[V16-1064]	[V16-1042]	\$99.95
GE40 None	[V16-1068]	[V16-1046]	\$99.95
PRT None	[V16-1070]	[V16-1048]	\$99.95

Piezo PILOT™ Scalers

Piezo Pilot™ scalers offer easy portability, complementing a light-weight, compact design

- 1 - Detachable handpiece
- 1 - Omni-directional foot pedal
- 1 - Quick-disconnect water line
- 3 - Autoclavable handpiece sleeves
- 8 - Ultrasonic tips
- 8 - Torque wrenches



Acteon** Style	[V16-0286]	\$1,430.00
EMS** Style	[V16-1760]	\$1,005.00

Piezo GO-PILOT™ Dual Reservoir Scalers

This is a great feature for practices where space is an issue or the unit will be shared.

Co-Pilot™ Includes:

- 1 - Piezo Pilot™ ultrasonic scaler
- 1 - Detachable handpiece
- 1 - Omni-directional foot pedal
- 10 - Ultrasonic tips
- 10 - Torque wrenches



Acteon** Style	[V16-1762]	\$1,955.00
EMS** Style	[V16-1764]	\$1,955.00

ENDO|ULTRA® Patented

Superior activation* (compared to sonic devices) The EndoUltra® provides the ultrasonic energy required to effectively produce cavitation resulting in significantly better endodontic procedures.



ENDO ULTRA®	SKU	PRICE	
Complete EndoUltra® Kit	[V16-1920]	\$650.00	
(1) cordless handpiece, (3) autoclavable handpiece sleeves, (3) Activator tips, (1) charger, and (1) tip wrench.			
	PACK	SKU	PRICE
Activator Tips	(3)	[V16-1918]	\$107.30
Autoclavable Handpiece Sleeves	(2)	[V16-1912]	\$28.50
Protective Barrier Sleeves	(100)	[V16-1916]	\$10.50
Tip Wrench	(1)	[V12-1914]	\$23.65

General Scaling Tips

Our most popular light to heavy-duty tips

General Scaling Tips for Piezo Pilot™ and ...

EMS Style:** Mini Piezon* tip, Scalex 880* tip, Bonart* tip, SuperSon EIE* tip, Master 400* tip, Parkel (Piezo)* tip, Dent America* tip

Acteon Style:** Vista P5* tip, NSK* tip, Sybron Endo* tip, Obtura Spartan* tip, ADEC* tip, J.Morita* tip, Dentsply/Tulsa** tip, Amdent* tip, Ultradent** tip

BUY 2, GET 1 FREE
Save up to 33% Per tip: \$99.95



THREAD STYLE	EMS** STYLE	ACTEON** STYLE
SU1 Light to medium Sub-gingival calculus	[V16-1028]	[V16-1000]
SU2 High density Supra-gingival calculus	[V16-1030]	[V16-1002]
SU3 Stain removal	[V16-1032]	[V16-1004]
SU4 Scaling of sensitive areas	[V16-1034]	[V16-1006]
SU5 Designed for easy interproximal scaling	[V16-1036]	[V16-1008]
SU6 Sub-gingival scaling	[V16-1038]	[V16-1010]

Periodontal Tips

"H" series (hygiene) and "PT" series (perio thin) Perio Tips for Piezo Pilot™

BUY 2, GET 1 FREE
Save up to 33% Per tip: \$99.95



THREAD STYLE	EMS** STYLE	ACTEON** STYLE
HA Light to medium Sub-gingival calculus	[V16-1112]	[V16-1084]
HC Universal curette design for sub- and Supra-gingival calculus	[V16-1118]	[V16-1090]
HFL Left Bend Light scaling of hard-to-reach areas (furcations and interproximal)	[V16-1114]	[V16-1086]
HFR Right Bend Light scaling of hard-to-reach areas (furcations and interproximal)	[V16-1116]	[V16-1088]
PTL Left Bend Sub-gingival pocket scaling of molars and pre-molars	[V16-1122]	[V16-1094]
PTR Right Bend Sub-gingival pocket scaling of molars and pre-molars	[V16-1124]	[V16-1096]
PTU Sub-gingival pocket scaling	[V16-1120]	[V16-1092]

VALIANT™ Multispectral Curing Light

BUY 2, GET 1 FREE
Save up to 52%

- Multispectral, uniform beam through 395-500 nm wavelength range.
- Versatile to polymerize nearly all light-cured dental materials.
- Quick-change battery pack that's easily detached and re-attached.
- 4 LED's operate through three curing modes plus transilluminator 'white light'.
- Intuitive, easy operation with one-button soft touch on/off switch.
- Lightweight and ergonomic style.



VALIANT™	SKU	PRICE	
Complete VALIANT™ Kit	[V16-1942]	\$1,226.95	
(1) cordless handpiece, (2) battery packs (North America Only), (1) charging base, (100) protective sleeves, and (1) curing light shield.			
	PACK	SKU	PRICE
Curing Light Shield	(3)	[V16-1934]	\$15.95
Battery Pack	(2)	[V16-1936]	\$237.50
Barrier Sleeves	(100)	[V16-1938]	\$21.95

Compare to Ultradent** Product:
Valo® LED Curing Light [5941] \$1,501.94

1.800.535.4535
—
PEARSONDENTAL.COM
—
PEARSON DENTAL
—

For **FREE GOODS**, fax a copy of your Pearson invoice to 262.636.9760 or e-mail jbarreno@vista-dental.com.

Pricing and offers are good 01/01/18 - 05/31/18. Invoices must be submitted by 06/30/18.

For more information or to place an order, contact your Pearson representative.

*Ultradent®, Blue Micro®, Black Micro®, Metal Dento-Infusor®, Inspiral®, Black Mini®, Endo-Eze®, Micro 20ga FX®, NaviTip®, ViscoStat®, Dento-Infusor®, IndiSpense®, Ultrapak®, Ultra-Etch®, Seek®, Sable™, Consepis®, UltraCal®, ChlorCid®, Valo® are all registered trademarks of ULTRADENT Products, Inc.

*Dentsply®, Max-i-Probe®, and *QMix are all registered trademarks of DENTSPLY International.

*Monoject™ is a registered trademark of Covidien AG Corporation.

*Acteon® is a registered trademark of Pierre Rolland Corporation. *NSK® is a registered trademark of Nakanishi INC. Corporation. *EMS® is a registered trademark of E.M.S. Electro Medical Systems S.A. *Mectron is a registered trademark of Mectron S.P.A.

*All saving percentages are based on Vista's quantity discount prices and competitors' 2017 prices.