

SDI | LUNA FLOW

UNIVERSAL FLOWABLE COMPOSITE



PERFECT FLOW
PERFECT STAY



CELEBRATING THE 50TH ANNIVERSARY OF SDI



LUNA FLOW

Luna Flow is a new extra strong flowable composite that is available in two viscosities.

With a blend of fillers in different ultrafine sizes to optimize handling, mechanical and optical properties, Luna Flow offers high radiopacity, control over the application, easy and accurate shade matching with color stability, excellent strength and wear resistance.

Such properties make Luna Flow a fantastic universal option for liner; base; provisional or restoration repairing; and Class V; amongst other indications.

RESTORATIONS WITH LUNA FLOW COMBINED WITH LUNA 2



Images courtesy of Dr Fay Goldstep & George Freedman - Canada



Images courtesy of Dr Jose Amengual Lorenzo - Spain

» "Amazing product! It is so easy to apply. Luna Flow is perfect, especially the low viscosity. I love it." «

DR GERARD MELKI - CANADA



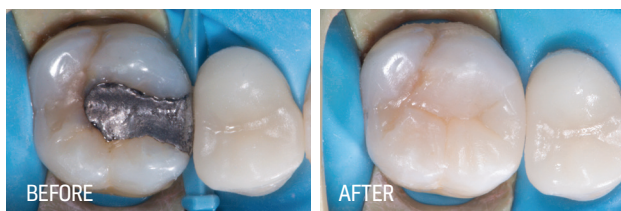
» "Luna Flow reflects SDI's successful efforts in improving dental materials." «

DR MARIO GONZALEZ BONILLA - SPAIN



» "SDI products make daily practice faster and more profitable, allowing dentists to save working time and obtain great results. SDI composites have excellent handling, fantastic finish and natural shine." «

PROF DR MARCO AURELIO CHAVES - BRAZIL



Images courtesy of Dr Bill Gergis, Founder of Biomimetic Aesthetic Dentistry - Australia

FLOWS AND STAYS PERFECTLY

Luna Flow is available in two viscosities to suit your clinical needs.

Use Luna Flow for superior handling and maximum control during application. This beautiful composite flows on demand, holds its shape and does not string.

For clinicians who prefer more flow, use Luna Flow LV - a low viscosity option.



LUNA FLOW Regular viscosity

LUNA FLOW LV Low viscosity

RESTORATION WITH LUNA FLOW

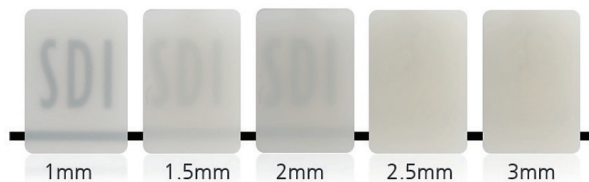


Images courtesy of Dr Carla Cohn - Canada

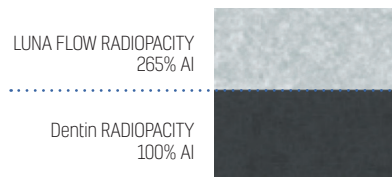
NATURAL TOOTH-LIKE PROPERTIES ACROSS ALL LIGHT

Using the Logical Shade Matching Technology with chameleon effect, Luna Flow shades were developed prioritizing value (lightness), while pigments were arranged in a logically increasing way, for a simpler and faster match to the Vita Classical Shade Guide®.

The Luna Flow Chameleon Effect and the innovative Shade Matching Technology mimics the natural properties of teeth across all light sources. Your patients will enjoy lifelike translucency, opalescence, and fluorescence.



Translucency in different thicknesses of Luna Flow shade A2



Source: Internal test data

HIGH COMPRESSIVE STRENGTH 421 MPa

Luna Flow offers an exceptionally high compressive strength of 421 MPa. As most mastication forces are compressive in nature, Luna Flow is well suited for use in posterior restorations to support the occlusal loads.

HIGH FLEXURAL STRENGTH 128 MPa

Luna Flow withstands masticatory forces in a similar way to dentin. Luna Flow is ideal for Class V cavities, where flexibility is important to ensure longevity of the restoration and satisfaction of the patient.

OUTSTANDING RADIOPACITY 265% AI

Luna Flow has impressive radiopacity (265%), providing a significant contrast to natural dentin/enamel (100%/170%). This contrast aids faster and more precise diagnosis.

RESTORATIONS WITH LUNA FLOW COMBINED WITH LUNA 2



 Images courtesy Dr Teo Vaca - Spain

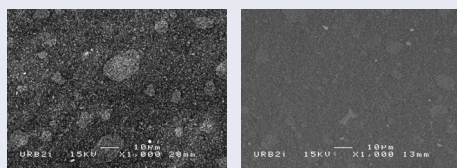
» "Shade matching and handling of Luna Flow are outstanding. Restorations are seamless." «

 DR FERNANDA ZEVIANI - AUSTRALIA



POLISHING FOR PERFECTION

The Luna Flow filler formulation is primed for excellent polishing results, wear resistance and longevity.



SEM before finishing and polishing

SEM after finishing and polishing

SOURCE: Independently tested by Unité de Recherches Biomatériaux Innovantes et Interfaces [URB2-EA 4462 Paris Descartes]. Chairman : Dr Jean-Pierre Attal.

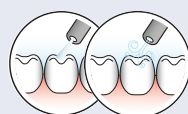
INSTRUCTIONS

For total or selective etch techniques:

- 1 Etch tooth surface with Super Etch 37% phosphoric acid for 10 seconds

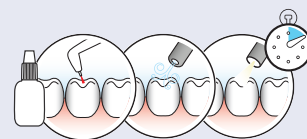


- 2 Wash thoroughly, remove excess water and keep moist

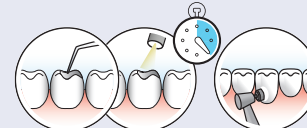


For self etch technique, skip step 1:

- 3 Apply Zipbond Universal according to instructions, blow gently for 5 seconds and light-cure for 10 seconds



- 4 Place Luna Flow in increments of 2mm or less, light-cure for 20 seconds, finish and polish





LUNA FLOW INTRO KIT SYRINGES

20 x disposable tips 20 gauge (1 bag of 20)	8566125
2 x LUNA FLOW syringe A2	
2 x LUNA FLOW syringe A3	



LUNA FLOW SYRINGE 2g REFILLS

LUNA FLOW Syr A1 - Vita®	8566101
LUNA FLOW Syr A2 - Vita®	8566102
LUNA FLOW Syr A3 - Vita®	8566103
LUNA FLOW Syr A3.5 - Vita®	8566104
LUNA FLOW Syr B1 - Vita®	8566106
LUNA FLOW Syr B2 - Vita®	8566107
LUNA FLOW Syr C2 - Vita®	8566110
LUNA FLOW Syr Opaque OA2: opaquer with A2 shade	8566115
LUNA FLOW Syr Opaque OA3: opaquer with A3 shade	8566116
LUNA FLOW Syr I - Incisal: more translucent, equivalent to enamel	8566118
LUNA FLOW Syr XB - Extra Bleach shade: equivalent to OM2 Vita®	8566121
LUNA FLOW Syr 2XB - 2x Extra Bleach shade: equivalent to OM1 Vita®	8566122



LUNA FLOW COMPLETE REFILLS (0.20g x 20 refills; 4g total)

LUNA FLOW Comp A1 - Vita®	8566151
LUNA FLOW Comp A2 - Vita®	8566152
LUNA FLOW Comp A3 - Vita®	8566153
LUNA FLOW Comp A3.5 - Vita®	8566154
LUNA FLOW Comp B1 - Vita®	8566156
LUNA FLOW Comp B2 - Vita®	8566157
LUNA FLOW Comp C2 - Vita®	8566160
LUNA FLOW Comp Opaque OA2: opaquer with A2 shade	8566165
LUNA FLOW Comp Opaque OA3: opaquer with A3 shade	8566166
LUNA FLOW Comp I - Incisal: more translucent, equivalent to enamel	8566168
LUNA FLOW Comp XB - Extra Bleach shade: equivalent to OM2 Vita®	8566171
LUNA FLOW Comp 2XB - 2x Extra Bleach shade: equivalent to OM1 Vita®	8566172



LUNA FLOW LV INTRO KIT SYRINGES

20 x disposable tips 20 gauge (1 bag of 20)	8566225
2 x LUNA FLOW LV syringe A2	
2 x LUNA FLOW LV syringe A3	



LUNA FLOW LV SYRINGE 2g REFILLS

LUNA FLOW LV Syr A1 - Vita®	8566201
LUNA FLOW LV Syr A2 - Vita®	8566202
LUNA FLOW LV Syr A3 - Vita®	8566203
LUNA FLOW LV Syr A3.5 - Vita®	8566204
LUNA FLOW LV Syr B1 - Vita®	8566206
LUNA FLOW LV Syr B2 - Vita®	8566207
LUNA FLOW LV Syr C2 - Vita®	8566210
LUNA FLOW LV Syr Opaque OA2: opaquer with A2 shade	8566215
LUNA FLOW LV Syr Opaque OA3: opaquer with A3 shade	8566216
LUNA FLOW LV Syr I - Incisal: more translucent, equivalent to enamel	8566218
LUNA FLOW LV Syr XB - Extra Bleach shade: equivalent to OM2 Vita®	8566221
LUNA FLOW LV Syr 2XB - 2x Extra Bleach shade: equivalent to OM1 Vita®	8566222



LUNA FLOW LV COMPLETE REFILLS (0.20g x 20 refills; 4g total)

LUNA FLOW LV Comp A1 - Vita®	8566251
LUNA FLOW LV Comp A2 - Vita®	8566252
LUNA FLOW LV Comp A3 - Vita®	8566253
LUNA FLOW LV Comp A3.5 - Vita®	8566254
LUNA FLOW LV Comp B1 - Vita®	8566256
LUNA FLOW LV Comp B2 - Vita®	8566257
LUNA FLOW LV Comp C2 - Vita®	8566260
LUNA FLOW LV Comp Opaque OA2: opaquer with A2 shade	8566265
LUNA FLOW LV Comp Opaque OA3: opaquer with A3 shade	8566266
LUNA FLOW LV Comp I - Incisal: more translucent, equivalent to enamel	8566268
LUNA FLOW LV Comp XB - Extra Bleach shade: equivalent to OM2 Vita®	8566271
LUNA FLOW LV Comp 2XB - 2x Extra Bleach shade: equivalent to OM1 Vita®	8566272

ORDER DETAILS

LUNA FLOW BULK KITS SYRINGES

5 x 2g syringe LUNA FLOW	
20 x applicator tips (1 bags of 20)	
LUNA FLOW BULK KIT A1 Equivalent to Vita® A1	8566130
LUNA FLOW BULK KIT A2 Equivalent to Vita® A1	8566131
LUNA FLOW BULK KIT A3 Equivalent to Vita® A3	8566132

LUNA FLOW LV BULK KITS SYRINGES

5 x 2g syringe LUNA FLOW LV	
20 x applicator tips (1 bags of 20)	
LUNA FLOW LV BULK KIT A1 Equivalent to Vita® A1	8566230
LUNA FLOW LV BULK KIT A2 Equivalent to Vita® A1	8566231
LUNA FLOW LV BULK KIT A3 Equivalent to Vita® A3	8566232



APPLICATORS

Premium Complet Applicator	5545022
Economical Complet Applicator	8100120

CLINICAL TIP: XB and 2XB Bleach shades are excellent for use in restorations after tooth whitening treatment with Pola (SDI Limited), and also on milky white teeth.



CLINICAL TIP: Luna Flow can be used with Zipbond Universal (SDI Limited) - a single component fluoride-releasing universal adhesive, with excellent handling and desensitizing effect.



YOUR OUR
SMILE. VISION.



MADE IN AUSTRALIA
by SDI Limited
Bayswater, Victoria 3153
Australia
www.sdi.com.au

AUSTRALIA 1800 337 003
AUSTRIA 00800 0225 5734
BRAZIL 0800 770 1735
FRANCE 00800 0225 5734
GERMANY 0800 100 5759

ITALY 00800 0225 5734
NEW ZEALAND 0800 808 855
SPAIN 00800 0225 5734
UNITED KINGDOM 00800 0225 5734
USA & CANADA 1 800 228 5166