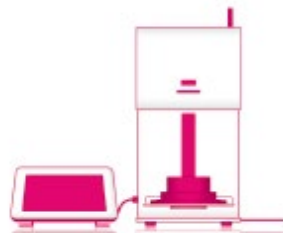


VITA

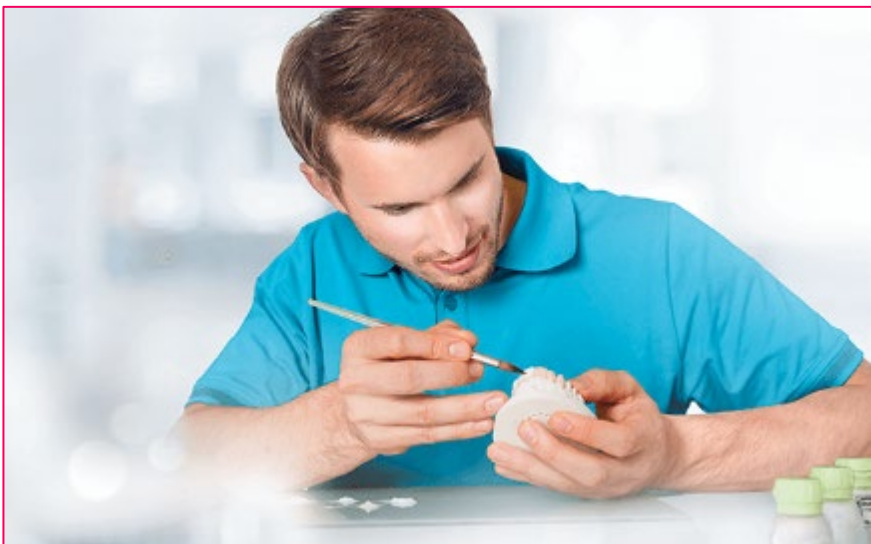
Product Quick Look / Chairside



VITA
NORTH AMERICA

VITA Product Overview (by User)

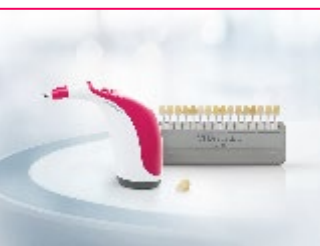
Product Quick Look



Lab / Dentist Connection

VITA has been developing high quality, innovative materials for dentists and dental technicians for almost 100 years.

VITA offers application specific products to fit both the Dentist and Dental Lab workflow. Ultimately the complete product line is available for the Dentist to prescribe from the lab, creating the ideal Lab / Dentist connection, tied together by VITA's Shade System Technology.



Shade



Teeth



CAD/CAM



Pressable



Veneering Material



Characterization



Furnaces

VITA Chairside Workflow Offering

Shade Determination

Always choose shade first.

Material Selection

Select ideal material based on shade availability and accuracy.

Characterization

Color to match nature.

Processing

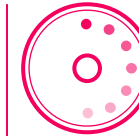
Systematic, accurate processing.



Shade
VITA created the Shade standards and formulas, and applies it to all VITA materials.



Millable
VITA offers the most comprehensive line of millable materials in the industry.



Coloring
VITA brings the color to dentistry with decades of experience and successful products.



Firing
VITA's highly accurate and intuitive Furnace line is unmatched.



VITA Classical Shade Guide
The original shade guide, that is the global standard for shade determination, tabs in order of hue.



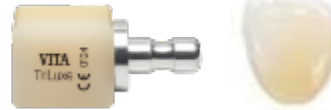
VITA 3D Master Linear Shade Guide
The premium solution for shade determination, highly scientific in a two step process, based on value, hue and chroma.



VITA EASYSHADE V
A compact spectrophotometer allowing for accurate shade determination in both classical and 3D Master shades.



VITA SUPRINITY
VITA SUPRINITY is a zirconia-reinforced, highly esthetic, high strength glass ceramic, that is at 541 MPa, the strongest millable material outside of Zirconia.



VITA VITABLOCKS
Feldspar ceramic for unsurpassed integration of shade. Available as monochromatic (Mark II), and polychromatic (Triluxe forte).



VITA ENAMIC
Unique hybrid ceramic with a dual ceramic polymer network structure. Available as mono and polychromatic types, in up to three translucency levels (T, HT, ST).



VITA CAD-temp
Composite block of highly cross-lined acrylate polymer with microfiller for the fabrication of long-term temporary restorations.



VITA YZ ZIRCONIA HT
High strength 1,200 Mpa block with excellent esthetics with perfect shade match, and characterizing using VITA ZIRCONIA YZ SHADE LIQUIDS.



VITA AKZENT PLUS
VITA AKZENT PLUS offers a complete system of stains for characterization and glazing for all dental ceramics, regardless of CTE.



VITA YZ Shade Liquids
A highly esthetic liquid shade system for coloring monochromatic VITA YZ Zirconia restorations prior to sintering.



SMART.FIRE
A firing unit developed specifically for dental practices for crystallization, glaze, stain and corrective firing.



ZYRCOMAT 6100MS
A sintering unit completely developed for all dental ceramic zirconia framework materials.

VITA Product Overview (Shade)

Product Quick Look



VITA Shade

VITA's focus is on precise tooth shade reproduction. This also includes establishing reliable processes in laboratories and dental practices, improving the workflow, saving time and money, and ultimately, producing superior esthetic results. VITA offers two globally recognized shade systems; classical and 3D-MASTER, along with application specific shade guides.

VITA Shade Workflow

Shade is not just for communication between the dentist and the lab. It is used throughout the entire workflow by the dentist and the Lab; Shade Determination, Communication, Reproduction and Control.

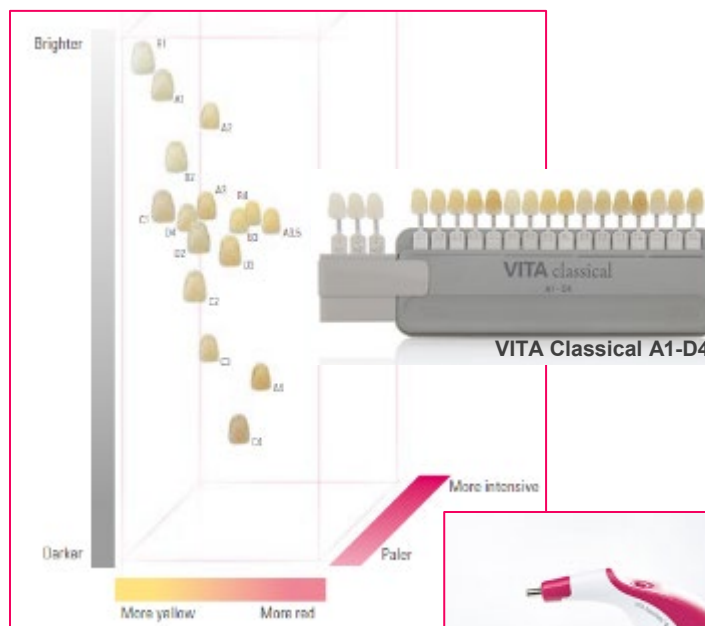


VITA shade
determination

VITA shade
communication

VITA shade
reproduction

VITA shade
control

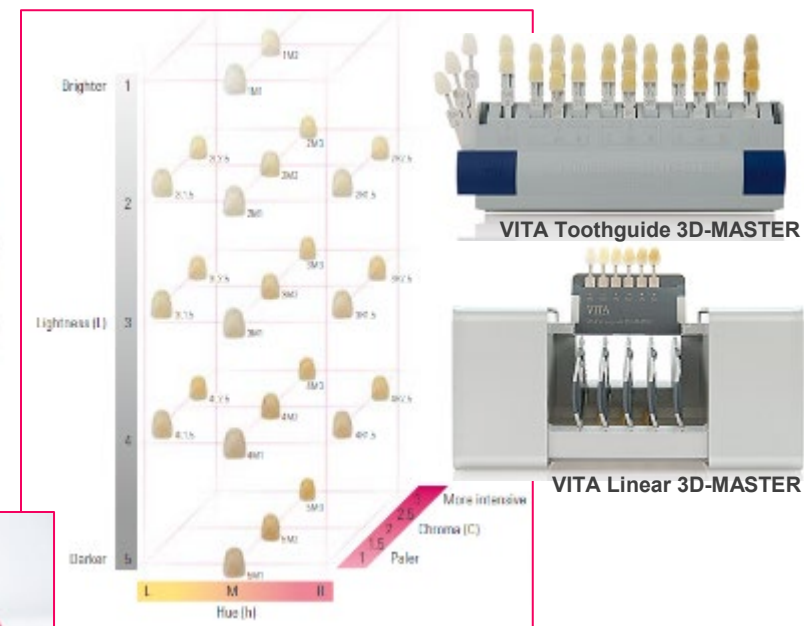


VITA classical A1-D4

An internationally established system for more than 70 years, 16 shade samples, practical shade sample sequence based on hues and empirical findings.



VITA Easysshade V for precise, fast and reliable shade determination, in both Classical and 3D-MASTER.



VITA SYSTEM 3D-MASTER

Shade system based on the optimum coverage of the color space of natural teeth, in accordance with scientific rules, 26 natural shade samples comprehensively cover the natural tooth color space.



VITA Product Overview (CAD/CAM)

Product Quick Look



VITA CAD/CAM

VITA has been developing CAD/CAM materials for dentists and dental technicians for more than 30 years. Key milestones have included VITABLOCKS, the first chairside milling block, ENAMIC the only ceramic hybrid of its kind, and YZ Solutions, VITA's true-to-shade, solution for precise and efficient zirconia restorations.

VITA SUPRINITY Workflow

VITA offers system components for all of its CAD/CAM materials workflow.



VITA shade determination

CAD/CAM Fabrication

Characterization / Firing

Polishing



VITA VITABLOCKS

A high quality feldspathic porcelain line of blocks, with the highest esthetics, in both monochromatic and multilayer, with no post firing required.



VITA YZ Solutions

High strength 1,200 Mpa block with excellent esthetics with perfect shade match, and characterizing using VITA ZIRCONIA YZ SHADE LIQUIDS.



VITA ENAMIC

A unique hybrid ceramic with a dual ceramic/polymer structure, resulting in fast milling, no post firing, and the closest material to natural tooth structure available. Available in blocks and disc, in monochromatic, and multi-color.



VITA CAD-Temp

Composite made of highly cross-linked polymer for the fabrication of long-term temporary restorations. Available in mono and polychromatic.



VITA SUPRINITY

A zirconia-reinforced, high-strength glass ceramic, in monochromatic in two translucency levels (T,HT). The strongest chairside material available, outside of Zirconia.



VITA CAD-Waxx

An acrylate polymer that burns out without leaving any residue for computer-aided fabrication of wax-ups and for the fabrication of drilling templates.



VITA Product Overview (5 Material Categories)

Product Quick Look

1 Resins	PMMA Telio CAD, Sinergia Block, Sintodent, Biotemp Now	Composites VITA CAD-Temp	Nanoceramics Lava Ultimate, Cerasmart, Shofu HC, Camouflage Now
2 Hybrids	Dual Network VITA ENAMIC	<i>The only Ceramic/Resin Hybrid!</i>	
3 Feldspathic	Feldspathics VITA Mark II, Triluxe, Triluxe Forte, Cerec Block	Leucite Reinforced Empress Cad, GC Initial	
4 Glass Ceramics	Lithium Di Silicate E.Max	Lithium Silicate Suprinity, Celtra Duo, Nice, Obsidian	
5 Zirconia	Zirconia Katana, Sirona InCoris, 3M Chairside, Bruxzir, VITA YZ Emax ZirCAD		

VITA

VITA Product Overview (Recommended Indications)

Product Quick Look



VITA CAD-Temp®
Composite/monochromatic

Long-term
temporary restorations



VITABLOCS® Mark II
Feldspar ceramic/monochromatic

Small esthetic
restorations



VITABLOCS® TriLuxe forte
Feldspar ceramic/multichromatic

Highly esthetic
anterior restorations



VITA ENAMIC®
Hybrid ceramic/monochromatic

Minimally invasive
posterior crowns



VITA ENAMIC® multiColor
Hybrid ceramic/multichromatic

Anterior crowns and highly
esthetic reconstructions



VITA ENAMIC® IS
Hybrid ceramic/monochromatic implant supported

Implant supported
molar restorations



VITA SUPRINITY® PC, pre-crystallized
Glass ceramic/monochromatic

High-strength material
with wide indication range



VITA

VITA Product Overview (Characterization)

Product Quick Look



VITA Characterization

With **VITA AKZENT Plus** stains, users can optimize the shade of all types of dental ceramic restorations simply and efficiently, regardless of the CTE of the restoration.

Depending on the user's preferred/customary method of processing and the relevant area of application, VITA AKZENT Plus stains are available as powders and as a ready-to-use pastes.

The glazing BODY STAINS and GLAZE material are also available as a spray, which, thanks to even application, ensures uniform surface treatment across a large area without any wastage as a result of scatter.



VITA AKZENT Plus SPRAY

Suited for users in a practice or laboratory who wish to adapt the shade of monolithic restorations. Even and uniform application.

BODY SPRAY
GLAZE SPRAY
GLAZE LT SPRAY
FLUOGLAZE LT SPRAY



VITA AKZENT Plus PASTE

Designed for the quick and easy characterization of ceramic restorations, including restorations made from VITABLOCS.

EFFECT STAINS
BODY STAINS
GLAZE PASTE
GLAZE LT PASTE
PASTE FLUID
CHROMA STAINS



VITA AKZENT Plus POWDER

Designed for dental technicians who wish to use them for characterizing conventional veneering ceramics.

EFFECT STAINS
BODY STAINS
GLAZE PASTE
GLAZE LT PASTE
PASTE FLUID
CHROMA STAINS



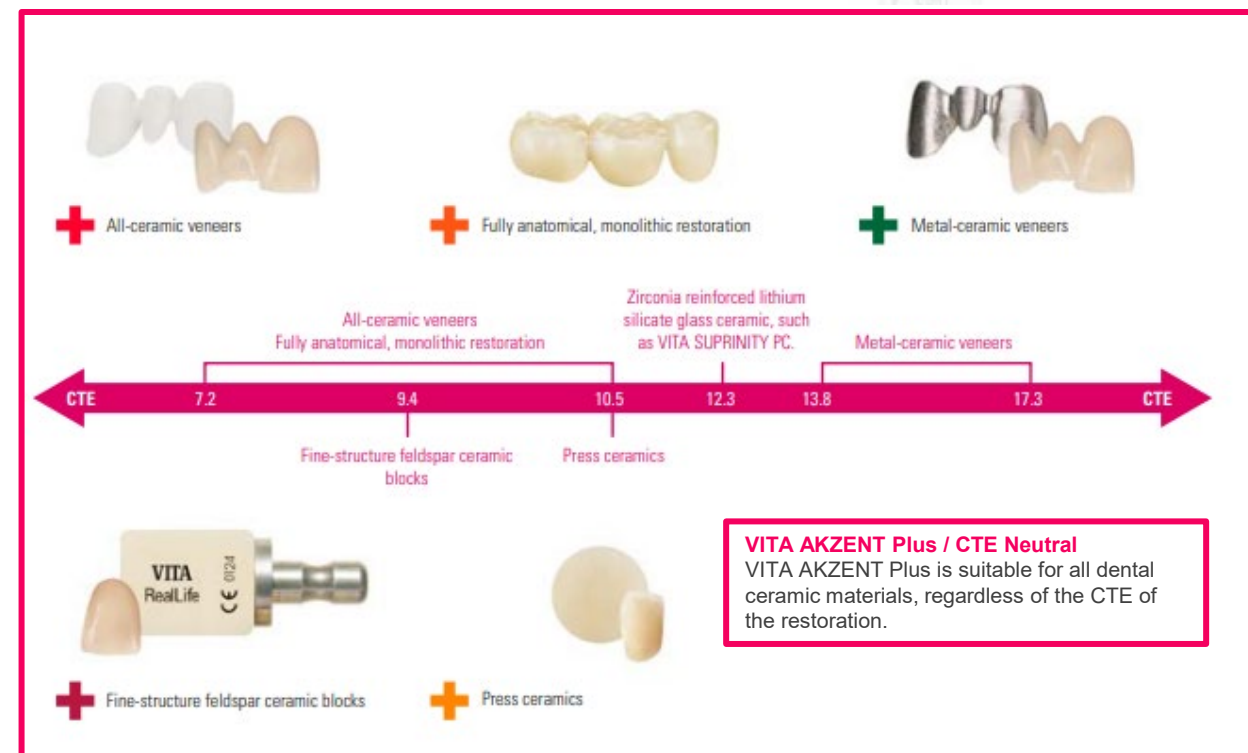
Spray



Powder



Paste



VITA Product Overview (Furnaces)

Product Quick Look

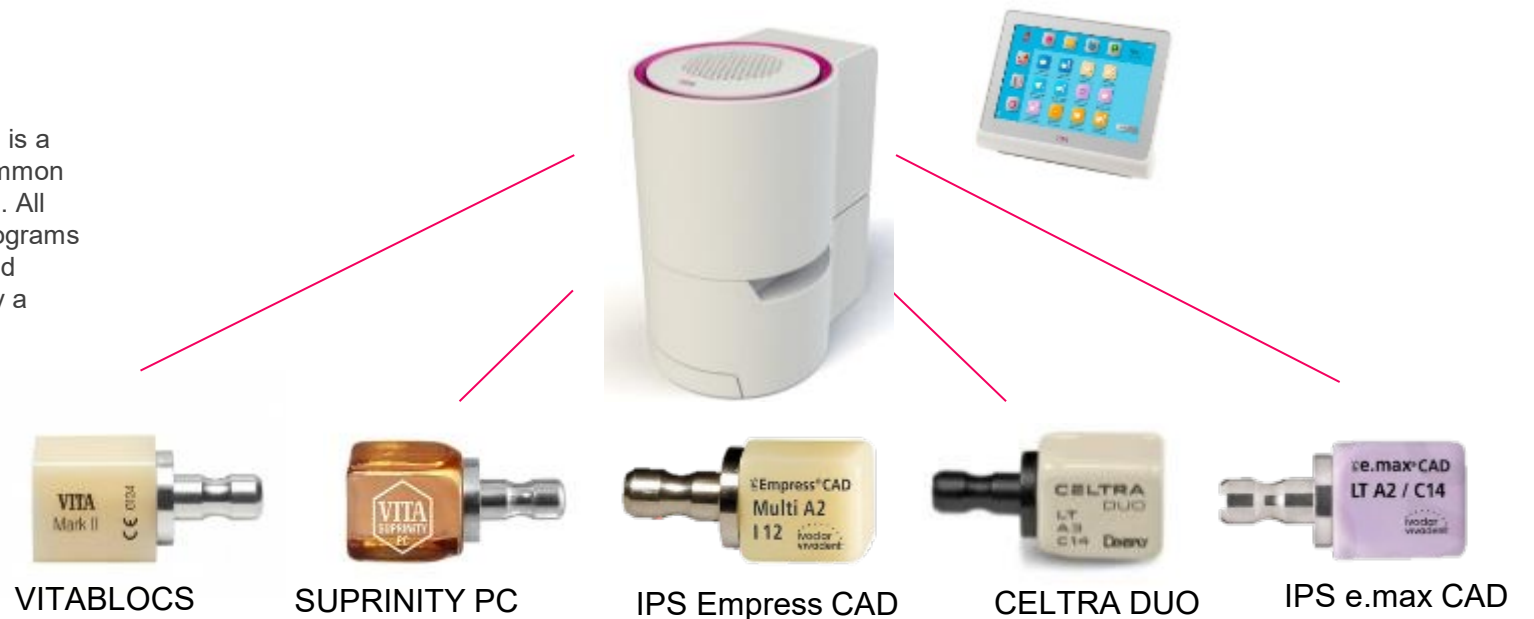


SMART.FIRE

- VITA SMART.FIRE is firing unit specifically developed for the dental office for Crystallization, Glaze, Stain and Correction firings for all chairside materials.
- The material specific coordinated firing programs are pre-installed. The intuitive operation concept allows for material selection and program start in only one step.
- The space-saving firing unit can be set up in all dental offices thanks to the compact construction size.
- With the integrated accessories drawer, the dental team has easy access to all necessary accessories, such as firing trays.



VITA SMART.FIRE is a firing unit for all common Chairside Materials. All necessary firing programs are pre-installed and directly available by a single touch



For more information visit www.vitanorthamerica.com

VITA North America. We are here to help!

VITA US Territories / Sales Representatives

North West (Northern CA, WA, OR, NV, AK, HI)

Rhonda Mueller, tel. 628-888-4168, rmueller@vitanorthamerica.com

Southern CA (Los Angeles)

Stephanie Sapien, tel. 626-502-5929, ssapien@vitanorthamerica.com

Southern CA (OC, San Diego)

Devon Thormodsgaard, tel. 714-232-3487, devont@vitanorthamerica.com

South West (AZ, NM, CO, UT)

Sal Mendez, tel. 424-376-7564, smendez@vitanorthamerica.com

North (ID, MT, WY, ND, SD, NE, MN, IA)

Nate Goettsch, tel. 612-655-5368, ngoettsch@vitanorthamerica.com

Great Lakes (IL, WI, MI, OH, IN)

Larry Weimer, tel. 630-258-0965, lweimer@vitanorthamerica.com

North East (MA, RI, CT, NH, VT, ME, NY, NJ, PA, DE)

Palmer Blair, tel. 401-742-2745, pblair@vitanorthamerica.com

East (GA, SC, NC, MD, DC, VA, WV, KY)

Joetta Dixon, tel. 470-469-3440, jdixon@vitanorthamerica.com

South East (FL, LA, MS, AL, TN, PR)

Sherry Altman, tel. 407-506-6373, saltman@vitanorthamerica.com

South (TX, KS, MO, AR, OK)

Drew Josephson, tel. 713-882-6028, djosephson@vitanorthamerica.com

VITA Canada Territories / Sales Representatives

British Columbia

Lorenza Lepri, tel. 778-829-4349, llepri@vitanorthamerica.com

Alberta / Saskatchewan / Manitoba

Bonita Lehmann, tel. 780-721-6489, blehmann@vitanorthamerica.com

Ontario West / NF

Sean Aucoin, tel. 226-929-7778, saucoin@vitanorthamerica.com

Ontario East / NS

Brandon Hlynsky, tel. 416-835-2486, bhlynsky@vitanorthamerica.com

Quebec West

Brigitte Lafleur, tel. 514-264-4862, blafleur@vitanorthamerica.com

Quebec East / PEI / NB

Karine Desilets, tel. 819-701-6224, kdesilets@vitanorthamerica.com

VITA North America Support

Customer Service 800-828-3839

customerservice@vitanorthamerica.com

7am to 4:30 pm (PST)

Technical Hotline 888-240-1640

help@vitanorthamerica.com

8 am to 5 pm (PST)

**Thank you
very much!**